



**Guardware**  
cleanroom hardware

**FURNITURE & EQUIPMENT**



[www.guardtech.com](http://www.guardtech.com)



# CLEANROOM FURNITURE



## CONTENTS



p4

Stepover Benches



p8

Shelving



p12

Sinks



p16

Chairs



p9

Accessories



p14

Taps



p20

Work Benches



p6

Lockers



p6

Cabinets



p10

Garment Storage



p15

Waste Sack Holders



p22

Trolleys & Buggies



# STEPOVER WITH COMPARTMENTS

Stepover benches manufactured from grade 304 stainless steel (also available in 316) with an electro-polished surface, continuously welded seams and non shedding adjustable levelling feet. Stepover benches create a physical barrier between the clean and dirty side of a changing area,

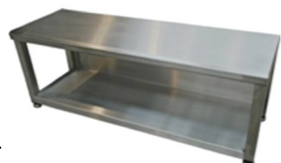
helping to ensure good gowning practice whilst also providing useful storage space in often cramped spaces. Stainless is a preferential material due to its cleanability, strength and durability properties. It is also a material that will not generate particulate and offers high levels of resistance to acids and cleaning agents.

## STAINLESS STEEL

● Standard configurations are presented on the following pages, however stepovers can be manufactured in custom sizes and configurations to suit any space and layout. Popular bespoke options include L-shape configurations and units with integrated lockers or pigeon hole storage space.

### Stepover with compartments:

- Grade 304 stainless steel frame, legs & surface
- Fully welded seams
- Adjustable levelling feet
- Storage compartments under bench
- Also available in grade 316 stainless



# BENCHES



### Single shelf

W	D	H	COMPARTMENTS	PRODUCT CODE
1000	400	450	4	GSSB4C404510
1200	400	450	5	GSSB5C404512
1500	400	450	6	GSSB6C404515
1800	400	450	7	GSSB7C404518
2000	400	450	8	GSSB8C404520
2500	400	450	10	GSSB10C44525

### Dual shelf

W	D	H	COMPARTMENTS	PRODUCT CODE
1200	400	450	10	GSSB10C44510
1200	400	450	12	GSSB12C44512
1500	400	450	14	GSSB14C44514
1800	400	450	16	GSSB16C44516
2000	400	450	18	GSSB18C44520
2500	400	450	20	GSSB20C44525

# TRESPA STEPOVER BENCHES

Trespa is a high-pressure compact laminate consisting of layers of wood-based fibres (paper and/or wood) impregnated with thermosetting phenolic resins and surface layers are impregnated with melamine based resins. These components are bonded together with simultaneous application of heat and high specific pressure to create a homogeneous non-porous material with increased density and high chemical resistance whilst providing attractive aesthetics. The bench framework is created from powder-coated steel box section to give the benches strength and stability.

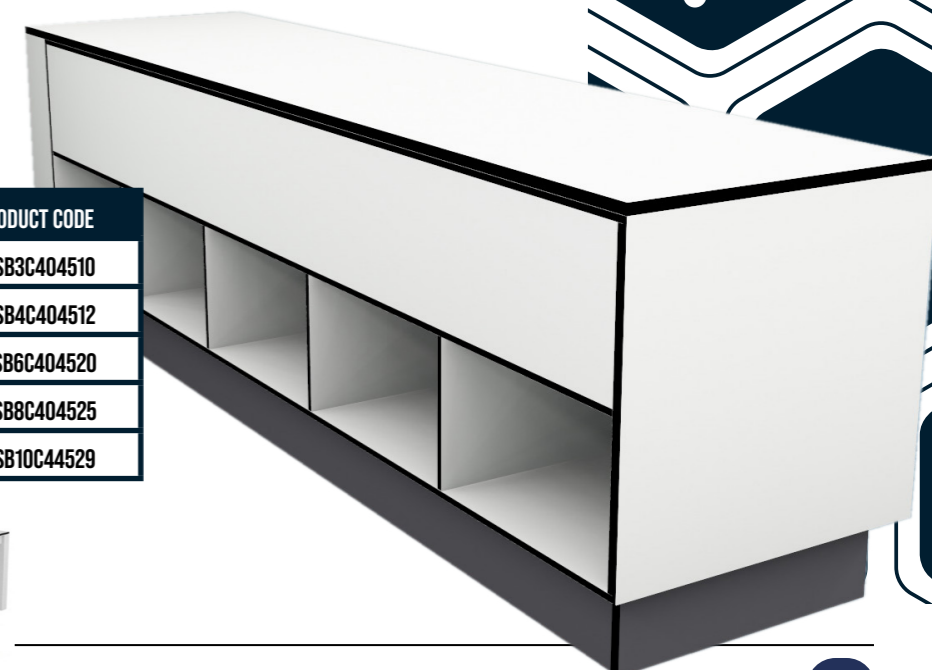
### Stepover with compartments:

- High pressure laminate (Trespa) surfaces
- Powder-coated steel box section framework
- Clean and durable material
- Storage compartments under bench
- Available with lockable cabinet doors
- Available with coat rail and hooks or hangers



W	D	H	COMPARTMENTS	PRODUCT CODE
1000	400	450	3	GTSB3C404510
1200	400	450	4	GTSB4C404512
2000	400	450	6	GTSB6C404520
2500	400	450	8	GTSB8C404525
2900	400	450	10	GTSB10C44529

Also available as a seating bench:



# LOCKERS

## STAINLESS STEEL

Manufactured from grade 304 stainless steel with a sloping top to prevent particulate settlement, Guardtech stainless lockers are

designed to provide operators with safe storage of personal belongings and clothing prior to entrance into the controlled area.



- Mild steel painted
- Compartments individually lockable
- May be louvered for air circulation
- Sloping roof optional
- Variety of door arrangements
- Locks available

UNITS	PRODUCT CODE
1	GTCLOCKER1
2	GTCLOCKER2
3	GTCLOCKER3
4	GTCLOCKER4
5	GTCLOCKER5
6	GTCLOCKER6

## GARMENT LOCKERS

Call 0330 113 0303



# CABINETS

## STAINLESS STEEL

Manufactured from grade 304 stainless steel, on adjustable levelling legs to aid cleaning underneath and with a sloping top to prevent particulate settlement. Tall cupboards are available with internal shelves and can be lockable.



Tall cabinet

Guardtech  
cleanroom hardware

- Grade 304 stainless steel
- Adjustable levelling feet
- Hygienic sloping roof
- Internal shelves available
- Available as mobile units on castors
- Available in grade 316 stainless
- Available with camlock and key

W	D	H	PRODUCT CODE
900	457	1880	GSTC18457900
1200	457	1880	GSTC2D4571200
900	610	1880	GSTC2D610900
1200	610	1880	GSTC2D6101200

## Short cabinets with drawers



Manufactured from grade 304 stainless steel, available as cabinet units, drawer units or a combination of both. Integrated cupboard and drawer handles with hygienic slope, units raised from the floor with adjustable levelling legs to facilitate accessible cleaning underneath.

**CUPBOARDS:** Each with internal mid height shelf  
**DRAWER UNITS:** Each comprise of four drawers (as pictured)

- Grade 304 seamless welds
- Available with sliding doors
- Available with camlock & key
- Available in grade 316
- Available with 13-amp sockets
- Internal shelf options

CONFIGURATION	W	D	H	PRODUCT CODE
One door + one drawer unit	1200	600	850	GSSC1C4D1285
Two door cupboard + one drawer unit	1500	600	850	GSSC2C4D1585
Two door cupboard + two drawer units	1800	600	850	GSSC2C8D1885
Two door + one overhead drawer	1200	600	850	GSSC2C1D1285
Two door + two overhead drawers	1200	600	850	GSSC2C2D1285

# TRESPA

Trespa cabinets are designed to be long-lasting, easy to clean and resistant to chemicals and acids. This product is designed to be manoeuvrable and fit underneath Trespa worktops.



- Designed to fit underneath work benches
- Easy to clean, chemical resistant surface
- Damage resistant Trespa TopLab Base worktop
- Adjustable leveling feet
- Hygienic sloping roof

D	L	H	CUPBOARDS	CUPBOARD ONLY	+ ONE LARGE DRAWER	+ MULTI-DRAWERS
600	600	850	1	GT1C0D608560	GT1C1D608560	-
1200	600	850	2	GT2C0D608512	GT2C1D608512	GT2C2D608512
1500	600	850	3	GT3C0D608515	GT3C1D608515	GT3C3D608515
1800	600	850	4	GT4C0D608518	GT4C1D608518	GT4C4D608518

# SHELVING

## STAINLESS RACKING

Guardtech stainless racking is manufactured from grade 304 stainless steel 30x30mm box section, continuously seam welded to eliminate ledges that are typically found with standard modular shelving units.

- Standard shelves are slatted to allow for airflow to pass through and to minimise ledges for particulate settlement, but can also be provided solid or perforated.

- Grade 304 stainless steel 30mm box section
- Fully welded construction
- Available as mobile unit with swivel castors
- Available with solid or perforated stainless sheet shelves
- Available as two, three and five-shelf units



Four legs - four shelf units

W	D	H	PRODUCT CODE
610	450	1530	GSSR4S450610
914	450	1530	GSSR4S450914
1219	450	1530	GSSR4S451219
1524	450	1530	GSSR4S451524
1829	450	1530	GSSR4S451829
610	600	1530	GSSR4S600610
914	600	1530	GSSR4S600914
1219	600	1530	GSSR4S601219
1524	600	1530	GSSR4S601524



## STAINLESS STEEL WIRED UNITS

A cost-effective alternative to solid stainless shelving, grade 304 wire racking units, durable and cleanable, which also allow for maximum airflow around stored products.

For more info on these units, call 0330 113 0303

- Grade 304 stainless steel shelves
- Grade 304 stainless steel poles
- Adjustable levelling feet
- Configurable shelf heights
- 100kg max loading per shelf
- Mobile version available
- Available with four or six legs
- Available as a trolley unit with handle

# CLEANROOM ACCESSORIES

Stainless steel fire extinguishers with stand

- Corrosion resistant
- Double stand



Multi-purpose dispenser

- Designed to hold pair packed gloves
- Also goggles, overshoes, mob caps
- Grade 304 stainless steel
- Vision slots
- Hinged lid and lip at the front



W	D	H	COMPARTMENT	PRODUCT CODE
300	200	400	Single	GSMPD1402030
600	200	400	Double	GSMPD2402060
900	200	400	Triple	GSMPD3402090

Glove dispenser

- Designed to hold boxed gloves
- Also beard snoods & mob caps
- Grade 304 stainless steel
- Open top for easy loading
- Wall mounted



W	D	H	COMPARTMENT	PRODUCT CODE
165	100	260	Single	GS6D1B260165
330	100	165	Double	GS6D2B165330
495	100	165	Triple	GS6D3B165495



Paper towel dispenser

- Grade 304 stainless steel
- Wall mounted
- Top loading

W	D	H	PRODUCT CODE
290	100	365	GSPTDT290365



Centre pull roll dispenser

- Grade 304 stainless steel
- Wall mounted
- Vision slot

W	D	H	PRODUCT CODE
200	215	365	GS6D2215365



Dyson hand dryer

- Touch-free proximity sensor
- Antibacterial additive in the paint
- HEPA filtered air supply
- Extends only 100mm from wall

W	D	H	PRODUCT CODE
235	100	395	GSDVHD235395



Wall mounted coat hooks

- Available in grade 304 stainless
- Pre-drilled for easy wall mounting

HOOKS	STAGGERED	NON-STAGGERED
10	GSWMCHST0010	GSWMCHNST010
20	GSWMCHST0020	GSWMCHNST020

# GARMENT STORAGE

## STAINLESS STEEL RAIL

Grade 304 stainless steel box section frame with tube rail complete with stainless steel captive hangers for garment storage in change areas.

Standard option comes as a basic rail, but can also be manufactured with coat hooks.

- Grade 304 stainless steel
- Can be integrated with stepover benches
- Adjustable levelling feet
- Mobile version available
- Also available with hooks
- Available in grade 316



Coat hooks available – call 0330 113 0303 or email [sales@guardtech.com](mailto:sales@guardtech.com)

L	W	H	HANGERS	PRODUCT CODE
1200	600	1600	10	GSGR10120160
1200	600	1600	15	GSGR15120160
1200	600	1600	20	GSGR20120160
1300	600	2180	12	GSGR12130218
1600	600	2180	24	GSGR24160218



# GARMENT LOCKER



● Garment lockers are used as part of a uniform management system, allowing for inventory to be stored in individual lockers and re-stocked with master access to all compartments.

- Supplied with cam or hasp & staple locks
- 304 grade stainless steel
- Compartments individually lockable
- Can be louvred for air circulation
- Sloping roof option
- Master door to front or rear
- Available in grade 316



COMPARTMENTS	W	D	H	PRODUCT CODE
10	400	405	1990	GSGD10405400
15	400	405	1990	GSGD15405400
45	1050	405	1990	GSGD45451050
45	972	405	1990	GSGD45451990

# PIGEON HOLE SHOE RACK



- Grade 304 stainless steel
- Adjustable levelling feet
- Open front and easy to clean sloping top
- Can be incorporated into stepover benches

PAIRS	W	D	H	PRODUCT CODE
10	569	350	1700	GSSR10170569
15	840	350	1700	GSSR10170840
20	1120	350	1700	GSSR20171120
30	1690	350	1700	GSSR30171690

# SINKS

Guardtech sinks are manufactured from grade 304 stainless steel and are designed for washrooms and change areas in critically controlled environments. Sinks are available with a standard lever tap system, knee operated or with infrared motion detection taps for hands-free operation to reduce cross contamination from contact.

The following pages illustrate some standard options – however, sink and tap configurations can be manufactured to meet the exact space and specification requirements of your business.

- Grade 304 stainless steel
- One tap and bowl per operator configuration
- Motion detector taps as standard
- Sloping top and high splashback
- Dyson Airblade taps (pictured) available
- Available in grade 316 stainless steel

OPERATORS	W	D	H	SINK H	PRODUCT CODE
1	565	540	1450	850	GSBS1P540565
2	1130	540	1450	850	GSBS2P541130
3	1695	540	1450	850	GSBS3P541695
4	2290	540	1450	850	GSBS4P542290



Wall-mounted sink



## FEATURES

- Easy to clean sloping top
- Optional under-sink shelving & cupboards
- Available with point-of-use heaters
- Drainage pumps can be incorporated
- Open pedestal or stainless shroud options
- Available in 316 stainless steel

## INSET BOWL SINK UNITS



## SINKS WITH DRAINER & CUPBOARD



- Easy to clean sloping top
- 100mm upstand
- Single or double bowl configuration
- Also available with tall splashback
- Flush wall fitting provided by inset legs
- Taps mounted on rear ledge or splashback
- Height adjustable versions available

## TROUGH – KNEE OPERATED

- Trough-style basin
- Also available with motion detector taps or Dyson Airblade taps
- Available open on pedestal or shrouded in 304 stainless steel
- Also available as a wall-mounted unit

OPERATORS	W	H	PEDESTAL	SHROUDED
1	465	400	GSTSKP140465	GSTSKS140465
2	800	400	GSTSKP240800	GSTSKS240800
3	1200	400	GSTSKP340120	GSTSKS340120
4	1600	400	GSTSKP440160	GSTSKS440160
5	2000	400	GSTSKP540200	GSTSKS540200
6	2400	400	GSTSKP640240	GSTSKS640240



Pedestal version pictured



## UTILITY SINKS

- Easy to clean sloping top
- 350mm tall splashback
- Flush wall fitting provided by inset legs
- Taps mounted on rear ledge or on splashback
- Single or double bowl configuration
- Also available with low splashback

Single bowl utility sink

Double bowl utility sink

W	D	H	BOWL D	BACK H	PRODUCT CODE
1410	750	850	450	350	GSUS2B451410
1910	750	850	450	350	GSUS2B451910
1410	750	850	600	350	GSUS2B601410
1910	750	850	600	350	GSUS2B601910

W	D	H	BOWL D	BACK H	PRODUCT CODE
910	750	850	450	350	GSUS1B450910
1160	750	850	450	350	GSUS1B451160
1410	750	850	450	350	GSUS1B451410
1910	750	850	450	350	GSUS1B451910
910	750	850	600	350	GSUS1B600910
1160	750	850	600	350	GSUS1B601160
1410	750	850	600	350	GSUS1B601410
1910	750	850	600	350	GSUS1B601910

Ideal for use in washrooms combined with pre-rinse tap units, Guardtech sink, drainer and cupboard combinations provide the perfect self-contained wash station with ample storage solutions.

CONFIGURATION	W	D	H	PRODCUT CODE
Single drainer & bowl with two-door cupboard	1000	600	900	GSS1D1B2C100
Single drainer & bowl with three-door cupboard	1800	600	900	GSS1D1B3C180
Single drainer & two bowl with three-door cupboard	1800	600	900	GSS1D2B3C180
Double drainer & two bowl with four-door cupboard	2400	600	900	GSS2D2B4C240

# TAPS & DRAINAGE

A range of specialist taps and pre-rinse units can be installed on any Guardtech sink unit from the previous pages.

TAP	PRODUCT CODE
Dyson Airblade tap	GSTDA1000000
Motion sensor tap	GSTMS1000000
Lever 3" pillar tap	GSTL3P000000
Deck lever 3" tap	GSTDL3000000
Pre-rinse mono block	GSTTPRM0000
Short pre-rinse	GSTSPR000000
Short pre-rinse with pot filler	GSTSPRPF0000



Dyson Airblade tap

Motion sensor tap



Deck lever 3" tap



Lever 3" pillar tap



Short pre-rinse with pot filler



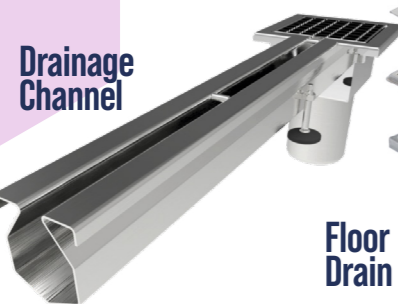
Short pre-rinse



Pre-rinse mono block

## DRAINAGE

Drainage Channel



Floor Drain

- Stainless steel drainage products provide an easy-to-clean, non-corrosive solution
- Drainage pipes, channels, drains and dump pots available in 304 or 316 stainless steel
- Available in a wide range of sizes and configurations
- Guardtech can also provide quotation for ground-works. Please call to hear all your options

TAP	PRODUCT CODE
Stainless straight drain pipe	Call for options
Stainless drainage channel	Call for options
Stainless floor drain	Call for options
Stainless bends	Call for options

# WASTE SACK HOLDERS

Waste sack holders in grade 304 stainless steel, open or shrouded units available with a hands-free system using a foot pedal to operate the lid, eliminating hand contact and minimising the risk of contamination.



- Grade 304 stainless steel
- 350mm ring diameter
- 75-litre capacity
- Complete with lid
- Bag-clamping band

W	D	H	PRODUCT CODE
500	400	800	GSBLPS504080



- Grade 304 stainless
- 350mm ring diameter
- 75-litre capacity
- Complete with lid
- Bag-clamping band

W	D	H	PRODUCT CODE
500	400	800	GSBLP0504080



- Grade 304 stainless
- Swing lid
- Removable top
- Adjustable feet
- Fully enclosed

W	D	H	PRODUCT CODE
400	400	800	GSBLFS404080
300	300	600	GSBLFS303060



- Grade 304 stainless
- 350mm ring diameter
- Free standing
- 800mm high
- Bag-clamping band

CONFIGURATION	D	PRODUCT CODE
With lid	350	GSBNNWM00350
Without lid	350	GSBLNWM00350



- Wall mounted
- Grade 304 stainless
- 350mm diameter
- With or without lid
- Bag-clamping band

D	H	PRODUCT CODE
350	800	GSBNN0504080



# CLEANROOM CHAIRS

## MVMT PRO

The MVMT Pro is designed for today's ultra-critical environments including static-sensitive and particle/microbe-controlled areas. The MVMT Pro offers weight-activated control, meaning an individual user's weight sets the tension, which alleviates resetting controls in multi-user shift workplaces.

- The seating is engineered for a task-specific range of motion and constant use. The MVMT Pro has a high end modern aesthetic and positively enhances corporate image.

- Waterfall-front seat 18.5" wide x 17" deep x 3" thick with four-way contouring

- Backrest 15.5" wide with full lumbar support

- Soft-touch pneumatic seat-height adjustment, rearward seat tilt, backrest tilt and height adjustment

- Optional - static control seating with ESD upholstery - rated to Class 1/ISO Class 3

- Dual-wheel non-marring polyurethane casters resist movement when the chair is unoccupied

- Lock-out control mechanism can be locked in three different reclining positions with a simple twist of a knob

- Suitable for ISO3 to ISO5 controlled environments

- QR code profile system delivers individual webpage for every specific MVMT unit manufactured

- Hermetically sealed under-seat rubber boot encapsulates moving parts and meets the stringent requirement of ISO3

- Supported by a generous 13-year warranty



SEAT HEIGHT	BACK REST HEIGHT	BLUE UPHOLSTERY	BLACK UPHOLSTERY
Desk (17 - 21")	Tall (19.5")	GCMVPBL17195	GCMVPBK17195
Bench (20 - 27")	Tall (19.5")	GCMVPBL20195	GCMVPBK20195
High Bench (24 - 33")	Tall (19.5")	GCMVPBL24195	GCMVPBK24195
Desk (17 - 21")	Short (15")	GCMVPBL01715	GCMVPBK01715
Bench (20 - 27")	Short (15")	GCMVPBL02015	GCMVPBK02015
High Bench (24 - 33")	Short (15")	GCMVPBL02415	GCMVPBK02415



Arm rest

Armrest adjustment - height, width and depth can be adjusted & locked



Foot ring

Height adjustable stainless steel footring - 22" diameter slides easily, holds positively and stays put



Controls

Adjust seat height, tilt, slide, backrest angle and height, micro-tension control & control lockout



Base

Resistance casters featuring a semi-soft tread that won't roll away easily

# MVMT TECH

Like the MVMT Pro, the Tech Series was created for ultra-critical environments including static-sensitive and particle/microbe-controlled areas such as medical device manufacturing, genetic research, pharmaceutical processing and similar facilities.

- Tech Series comes without arms as standard to allow tucking under work surfaces. Models available with tall and medium backrests and 13-year warranty.

- Similar to the MVMT Pro but with slightly downgraded control mechanisms, a cost effective yet high quality cleanroom seating option

- Intuitive functionality including weight-activated control and synchronous seat and backrest

- Engineered for task-specific range of motion and frequent use

- Exclusive QR code product tag delivers individual webpage for every MVMT unit manufactured

- Easy wipe-down upholstery

- ISO Class 5 clean room models available

- Dual-wheel non-marring polyurethane casters resist movement when the chair is unoccupied, enhancing workplace safety by inhibiting chair from rolling away

- Arm rests are available upon request

- Also available in high bench size (seat height 24-33")



Controls

Task control with soft touch pneumatic adjusts seat height and backrest angle and height



Ergonomic

Contoured foam and vacuum formed vinyl upholstery provide well-supported comfort

SEAT HEIGHT	BACK REST HEIGHT	BLUE UPHOLSTERY	BLACK UPHOLSTERY
Desk (17 - 21")	Tall (19.5")	GCMVTBL17195	GCMVTBK17195
Bench (20 - 27")	Tall (19.5")	GCMVTBL20195	GCMVTBK20195
High Bench (24 - 33")	Tall (19.5")	GCMVTBL24195	GCMVTBK24195
Desk (17 - 21")	Short (15")	GCMVTBL01715	GCMVTBK01715
Bench (20 - 27")	Short (15")	GCMVTBL02015	GCMVTBK02015
High Bench (24 - 33")	Short (15")	GCMVTBL02415	GCMVTBK02415



# CLEANROOM CHAIRS

## ELITE

Elite is designed for use at 34-44" high benches. Features include easy pneumatic seat height adjustments from 22-32", an ergonomic seat with four-way contouring and internal seat board bumperguard, a mid-sized back with lumbar support and a plastic protective panel, plus convenient backrest tilt and height adjustments.

- The seat and back are covered with Grade 2 vinyl upholstery for durability and easy-cleaning. The chair rests on a high-profile 25.6" diameter cast aluminium base. Other features include dual-wheel, non-marring polyurethane casters that resist movement when the chair is left unoccupied.

- Ergonomic seat with waterfall front

- Dual-wheel non-marring polyurethane casters resist movement when the chair is unoccupied, enhancing workplace safety by inhibiting seating from rolling away

- Rugged multi purpose seating with antimicrobial properties and UV inhibitor standard in every seat and backrest

- 13-year warranty with lifetime warranty on pneumatics

- Optional 22" diameter adjustable footring

- Also available in high bench configuration (seat height 24-33")



Arm rest

Optional arm rests – height can be adjusted & locked



Foot ring

Optional height adjustable stainless steel footring – 22" diameter slides easily, holds positively and stays put



Controls

Task control with soft touch pneumatic adjusts seat height and back rest angle and height



Base

Resistance casters featuring a semi-soft tread that won't roll away easily



SEAT HEIGHT	BACK REST HEIGHT	BLUE UPHOLSTERY	BLACK UPHOLSTERY
Desk (17 - 21")	Tall (19.5")	GCELTBL17195	GCELTBK17195
Bench (20 - 27")	Tall (19.5")	GCELTBL20195	GCELTBK20195
High Bench (24 - 33")	Tall (19.5")	GCELTBL24195	GCELTBK24195
Desk (17 - 21")	Short (15")	GCELTBL01715	GCELTBK01715
Bench (20 - 27")	Short (15")	GCELTBL02015	GCELTBK02015
High Bench (24 - 33")	Short (15")	GCELTBL02415	GCELTBK02415

# ARMOUR

Rugged multipurpose construction, full ergonomic adjustability and antimicrobial properties make this Armour series chair a versatile seating solution for lower grade controlled environments, laboratories and educational applications.

- This chair is designed for use at 29-33" high desks and benches. Functions include pneumatic seat height adjustment range of 17-21", fixed rearward seat tilt of 3.5 degrees, plus backrest tilt and height adjustment controls. Features 16" wide by 10.75" high backrest with lumbar support, ergonomic 17.5" wide by 15.5" deep seat with waterfall front, robust 23" diameter tubular steel base with affixed 21" diameter footring and dual-wheel, non-marring polyurethane casters that resist movement when the chair is unoccupied.

Easy-to-clean seat and backrest feature stipple finish and contain UV inhibitor and antimicrobial properties. Metal parts have chrome finish.

- Ergonomic seat with waterfall front

- Dual-wheel non-marring polyurethane casters resist movement when the chair is unoccupied, enhancing workplace safety by inhibiting seating from rolling away

- Rugged multi purpose seating with antimicrobial properties and UV inhibitor standard in every seat and backrest

- 13-year warranty with lifetime warranty on pneumatics

- Optional 22" diameter adjustable footring

- Also available in high bench configuration (seat height 24-33")



Controls

Task control with soft touch pneumatic adjusts seat height and backrest angle and height



Material

Seat and backrest made from Polypropylene containing UV inhibitor and antimicrobial properties



Base

Built-in tubular footring. Resistance casters featuring a semi-soft tread that won't roll away easily

SEAT HEIGHT	TUBULAR BASE INCLUDING FOOTRING	BASE PLUS ADJUSTABLE FOOTRING
Desk (17 - 21")	GCARMTB00017	GCARMSBFR017
Bench (20 - 27")	GCARMTB00020	GCARMSBFR020
High Bench (24 - 33")	GCARMTB00024	GCARMSBFR024

# CLEANROOM CHAIRS

## STRATOS

The Stratos cleanroom chair offers a designed ergonomic solution for healthcare and laboratory applications at a highly competitive price point.



This model features a HEPA filter on the underside of the seat which acts to restrict the expulsion of particles as well as the absorption of potential bacteria into the chair.



HEPA Filter

- Upholstered sculpted seat and back
- Unique back support bar provides back and seat angle adjustment as well as ratchet back height adjustment

### Options

- Fixed arms
- Height adjustable arms
- Safety castors
- Brake-loaded castors

All Stratos LAB chairs comply with ISO 14644-8 2022

### Dimensions

Back: 440w x 460h mm  
Seat: 460w x 460d mm



Fixed arm

HEIGHT/ MODEL	SITTING HEIGHT RANGE	WORKING HEIGHT RANGE	BLACK UPHOLSTERY	BLUE UPHOLSTERY
High: STR-1-LAB	605 - 855mm	740 - 1050mm	GCOXSTRHILAB01BLA	GCOXSTRHILAB01BLU
Intermediate: STR-2-LAB	530 - 730mm	675 - 910mm	GCOXSTRINLAB02BLA	GCOXSTRINLAB02BLU
Low: STR-3-LAB	450 - 580mm	640 - 815mm	GCOXSTRLOLAB03BLA	GCOXSTRLOLAB03BLU

\*Other colour options available. Speak to a Guardtech rep



Height adjustable arm



Seat

Unique back support bar provides back and seat angle adjustment



Foot ring

Superior performance stainless steel footring



Controls

Synchronised back and seat angle adjustment



Base

Sturdy base design offers reliable and comfortable user support

# OPUS

The Opus model is a polyurethane cleanroom seating solution designed to provide a robust and highly cleanable option for many applications.

- Unique back support bar provides back angle, height and lumbar adjustment
- Sculpted air channels to ensure maximum comfort and support
- Arm chair versions available in the Opus cleanroom chair range



OPU-3-LAB  
Adjustable arm



OPU-3-LAB  
Fixed arm



Controls

Back tilt, seat height and backrest height adjustment



Seat

Solid polyurethane seat and back

### Options

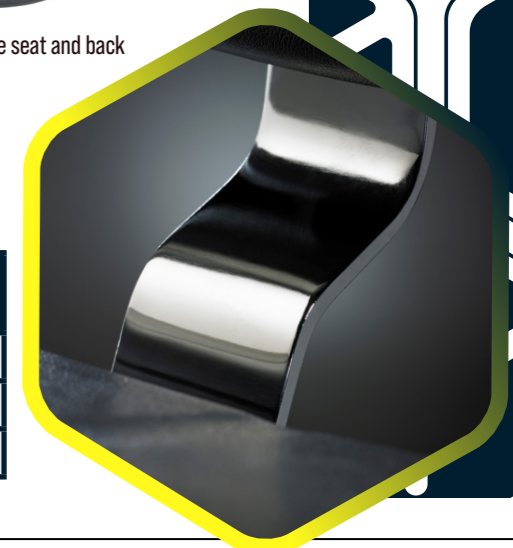
- Independent seat and back tilt adjustment
- Fixed arms
- Height adjustable arms
- Safety castors
- Brake-loaded castors
- Black nylon base
- Aluminium centre footring

ESD/Antistatic Option for Electronics Applications

### Dimensions

Back: 375w x 400h mm  
Seat: 440w x 430d mm

HEIGHT/ MODEL	SITTING HEIGHT RANGE	WORKING HEIGHT RANGE	BLACK UPHOLSTERY
High - OPU-1-LAB	590 - 840mm	740 - 1050mm	GCOXOPUHILAB01BLA
Intermediate - OPU-2-LAB	515 - 715mm	675 - 910mm	GCOXOPUINLAB02BLA
Low - OPU-3-LAB	420 - 550mm	640 - 815mm	GCOXOPULOLAB03BLA



# CLEANROOM CHAIRS

## STRADA

The Strada laboratory chair offers a super-stylish seating solution for a wide range of Life Sciences applications, clinical and medical environments and other Research & Development cleanroom spaces. There is an ESD/anti-static option for Electronics applications.

- Upholstered, sculpted seat and back
- Back tilt, seat height and backrest height adjustment

### Options

- Independent seat and back tilt adjustment
- Fixed arms
- Height adjustable arms
- Safety castors
- Brake-loaded castors
- Black nylon base
- Aluminium centre footring

ESD/Antistatic option for electronics applications

### Dimensions:

Back: 410w x 300h mm  
Seat: 460w x 460d mm



HEIGHT/ MODEL	SITTING HEIGHT RANGE	WORKING HEIGHT RANGE	BLACK UPHOLSTERY	GREEN UPHOLSTERY
High - STR-1-LAB	605 - 855mm	740 - 1050mm	GCOXSTRHICLAB01BLA	GCOXSTRHICLAB01GRE
Intermediate - STR-2-LAB	530 - 730mm	675 - 910mm	GCOXSTRINCHLAB02BLA	GCOXSTRINCHLAB02GRE
Low - STR-3-LAB	450 - 580mm	640 - 815mm	GCOXSTRLOCHLAB03BLA	GCOXSTRLOCHLAB03GRE

\*Other colour options available. Speak to a Guardtech rep



Superior performance vinyl upholstery

Back height and angle adjustment

Unique back support bar provides back angle, height and lumbar adjustment

Aluminium footring upgrade available

# KUDOS

## CLEANROOM STOOLS

Round stool seat in vinyl upholstery.



Gaslift height adjustment with fingertip control



Vinyl Upholstery

Upholstery



Dimensions:

Seat: 380mm diameter  
Optional large seat: 420mm diameter

HEIGHT/ MODEL	SITTING HEIGHT RANGE	WORKING HEIGHT RANGE	GREEN UPHOLSTERY	WHITE UPHOLSTERY	BLACK UPHOLSTERY
High - KUD-4-LAB	570 - 820mm	740 - 1050mm	GCOXKUDHISTLAB01GRE	GCOXKUDHISTLAB01WHI	GCOXKUDHISTLAB01BLA
Intermediate - KUD-5-LAB	490 - 680mm	675 - 910mm	GCOXKUDINSTLAB02GRE	GCOXKUDINSTLAB02WHI	GCOXKUDINSTLAB02BLA
Low - KUD-6-LAB	440 - 565mm	640 - 815mm	GCOXKUDLOSTLAB03GRE	GCOXKUDLOSTLAB03WHI	GCOXKUDLOSTLAB03BLA

\*Other colour options available. Speak to a Guardtech rep.

### Options (both)

- Glides
- Brake-loaded castors
- Black nylon base
- Low back
- Foot operated height adjustment

## KUDOS CLEANROOM SADDLES

Designed for operators who suffer from back problems or whose work demands mobility.

- Designed to provide a naturally balanced sitting position

### Dimensions:

KUD-7-LAB and KUD-9-LAB seat: 390w x 400d mm  
KUD-8-LAB seat: 360w x 400d mm  
KUD-9- Low back 410w x 300h mm



KUD-7-LAB

Seats

KUD-9-LAB

Adjustments

Fully upholstered sculpted seats

Seat height and tilt adjustment  
Higher and lower options available

MODEL	SITTING HEIGHT RANGE	PINK UPHOLSTERY	WHITE UPHOLSTERY
KUD-7-LAB	500 - 700mm	GCOXKUDSQSTSADO7PIN	GCOXKUDSQSTSADO7WHI
KUD-8-LAB	500 - 700mm	GCOXKUDROSTSADO8PIN	GCOXKUDROSTSADO8WHI
KUD-9-LAB	500 - 700mm	GCOXKUDLOSTSADO9PIN	GCOXKUDLOSTSADO9WHI



\*Other colour options available. Speak to a Guardtech rep

# WORK BENCHES

## STAINLESS STEEL

Workbenches manufactured from grade 304 stainless steel (also available in 316) with an electro-polished surface, continuously welded seams and non-shedding adjustable levelling feet. Stainless steel is a preferential material due to its cleanability, strength and durability properties. It is also a material that will not generate particulate and offers high levels of resistance to many acids and cleaning agents.

### Single bar frame:

- 304 grade stainless steel frame (30x30mm box) and work surface with fully welded frame & joint
- Heavy duty frame is manufactured from 50x50mm box section and has the rail at the rear of the unit
- Available on casters as a mobile bench
- Available in 316 stainless steel
- All sizes can be configured with one or two solid shelves



D	L	H	STANDARD FRAME	HEAVY-DUTY FRAME
600	600	900	GSWBSF600600	GSWBHD600600
900	600	900	GSWBSF600900	GSWBHD600900
1200	600	900	GSWBSF600120	GSWBHD600120
1500	600	900	GSWBSF600150	GSWBHD600150
1800	600	900	GSWBSF600180	GSWBHD600180
1500	750	900	GSWBSF750150	GSWBHD750150
1800	750	900	GSWBSF750180	GSWBHD750180
1800	900	900	GSWBSF900180	GSWBHD900180



### Triple bar frame:

- 304 grade stainless steel frame (30x30mm box) and work surface with fully welded frame & joint
- Heavy duty frame is manufactured from 50x50mm box
- Available on casters as a mobile bench
- Available in 316 stainless steel
- Triple bar undershelf

D	L	H	STANDARD FRAME	HEAVY-DUTY FRAME
600	600	900	GSWBS3600600	GSWBH3600600
900	600	900	GSWBS3600900	GSWBH3600900
1200	600	900	GSWBS3600120	GSWBH3600120
1500	600	900	GSWBS3600150	GSWBH3600150
1800	600	900	GSWBS3600180	GSWBH3600180
1500	750	900	GSWBS3750150	GSWBH3750150
1800	750	900	GSWBS3750180	GSWBH3750180
1800	900	900	GSWBS3900180	GSWBH3900180

### HEIGHT ADJUSTABLE WORK BENCH



### STAINLESS STEEL DESK



# TRESPA WORK BENCH

Trespa is a high-pressure compact laminate consisting of layers of wood-based fibres (paper and/or wood) impregnated with thermosetting phenolic resins and surface layers with melamine-based resins. The components are bonded together with simultaneous application of heat and high-specific pressure to create a homogeneous non-porous clean,



smooth and attractive material with increased density and chemical resistance. Our Trespa bench frameworks are

fashioned from powder-coated steel box section to give work benches strength and stability.

- Adjustable levelling feet or casters
- Work surface 16mm Trespa Toplab Base EO-00 White
- White powder-coated steel frame - 25x50mm 16 gauge
- 2mm chamfered edges (black)
- Draws below available
- Easy to clean

W	D	H	PRODUCT CODE	PLUS UPSTAND
600	600	900	GTSTDF906060	GTUPSF906060
900	600	900	GTSTDF906090	GTUPSF906090
1000	600	900	GTSTDF906010	GTUPSF906010
1200	600	900	GTSTDF906012	GTUPSF906012
1500	600	900	GTSTDF906015	GTUPSF906015
1800	600	900	GTSTDF906018	GTUPSF906018



### Trespa work bench with undershelf

- Adjustable levelling feet or casters
- Button control panel to change height setting
- Available with wheel casters
- Upstand available
- Draws below available

CALL: 0330 113 0303

# TROLLEYS

## STAINLESS STEEL

Guardtech stainless steel trolleys are available in two variations – grade 304 stainless solid steel shelves or wired. Guardtech also produce a range of trolley pass-through hatches which can be found in our equipment brochure.



SHELVES	L	W	H	PRODUCT CODE
2	700	500	950	GST250700950
3	700	500	950	GST350700950
2	900	600	950	GST260900950
3	900	600	950	GST360900950
4	900	600	1290	GST460900129
2	1000	650	950	GST265100950
3	1000	650	950	GST365100950
4	1000	650	1290	GST465100129
2	1100	700	1000	GST270110100
3	1100	700	1000	GST370110100
4	1100	700 <td 1350	GST470110100	

- Grade 304 stainless steel
- 360° casters with brakes on two wheels
- Available with brakes on all casters
- Fully welded seams
- Max load per shelf – 50kg
- Also available in stainless steel wired
- Available in grade 316 stainless

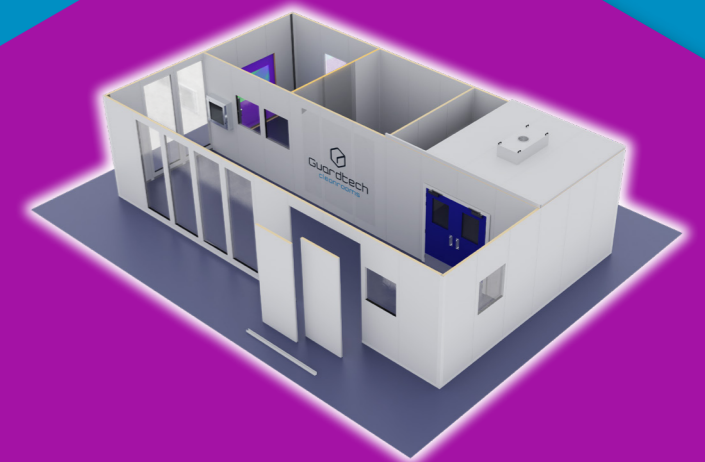


## BUGGIES

- Heavy duty 5mm reinforced base
- Fully welded crevice free construction with beaked front rim
- Pushing handle for operation
- Diamond pattern wheels for manoeuvrability
- Can be manufactured without sideflights
- Also available perforated

LITRES	H	L	W	PRODUCT CODE
120	500	600	540	GSB120506054
200	710	700	680	GSB200717068
300	710	940	680	GSB300719468

# A SOLUTION FOR EVERY NEED



# CLEANROOM EQUIPMENT



## CONTENTS

Transfer Hatches

p30



Fume Hoods

p40



Autoclaves

p42



Air Showers

p43



p32



Biosafety Cabinets

Laminar Flow Units

p36



p41



Nitrogen Generators

p44



Measuring Instruments



# TRANSFER HATCHES

## STAINLESS STEEL

Transfer Hatches provide a controlled air-tight zone between classified and non-classified or lower-graded environments for the transfer of products and ancillary items. Transfer hatches eliminate unnecessary traffic from the cleanroom and reduce particle ingress, while reducing the risk of cross-contamination. Chambers are adequately sized to allow for product wipe down with preferred cleaning agents.

● Stainless steel hatches are typically used in Pharmaceutical applications, providing high chemical resistance and hygienic surfaces for easy cleaning. Stainless construction is highly durable and ensures longevity of a piece of equipment that will be used many times throughout the course of a day.



### Twin stack trolley & pass through hatch

- Grade 304 & 316 stainless steel
- Mechanical or Electrical Interlock
- Reinforced
- Vertically sliding door available



W	L	H	INTERLOCK	PRODUCT CODE
1000	1000	1800	Mechanical	GS2HMI101018
1000	1000	1800	Electromagnetic	GS2HEM101018



### Pass through hatch

W	L	H	INTERLOCK	PRODUCT CODE
600	600	600	Mechanical	GSPHMI606060
600	600	600	Electromagnetic	GSPHEM606060

- Grade 304 & 316 stainless steel
- Mechanical or Electrical Interlock
- Reinforced
- Vertically sliding door available

### Trolley hatch

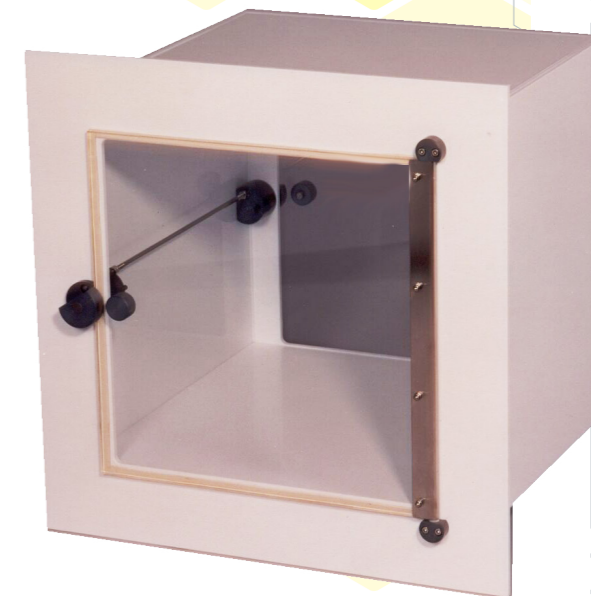
W	L	H	INTERLOCK	PRODUCT CODE
1000	1000	1200	Mechanical	GSTHMI101012
600	600	600	Electromagnetic	GSTHEM101012



- Grade 304 & 316 stainless steel
- Mechanical or Electrical Interlock
- Reinforced
- Vertically sliding door available

# POLYPROPYLENE

Polypropylene Transfer Hatches provide a cost-effective alternative to stainless steel while still providing the benefits of chemical resistance and hygienic surfaces. All seams are achieved with continuous hot welds and internal seams are covered. Front faces can be flush mounted and finished with a thin bead of silicone.



### Pass through hatch

- Clear Perspex doors for visibility
- Mechanical or Electrical Interlock
- Easy to clean surface
- No visible fixings
- Hinged doors

W	L	H	INTERLOCK	PRODUCT CODE
600	600	600	Mechanical	GPPHMI606060
600	600	600	Electromagnetic	GPPHEM606060

### Trolley hatch



W	L	H	INTERLOCK	PRODUCT CODE
1000	1000	1200	Mechanical	GPTHMI101012
600	600	600	Electromagnetic	GPTHEM101012

- Clear Perspex doors for visibility
- Mechanical or Electrical Interlock
- Easy to clean surface
- No visible fixings
- Hinged doors

### Twin stack trolley & pass through hatch

- Clear Perspex doors for visibility
- Mechanical or Electrical Interlock
- Easy to clean surface
- No visible fixings
- Hinged doors

W	L	H	INTERLOCK	PRODUCT CODE
1000	1000	1800	Mechanical	GP2HMI101018
1000	1000	1800	Electromagnetic	GP2HEM101018





# BIO SAFETY CABINETS

## CLASS II



Esco is a world leader in biological safety cabinets, offering the industry's widest product range, with thousands of installations in leading laboratories in more than 100 countries. Esco's

● The Airstream® Class II Biological Safety Cabinet is an effective solution for operator, product and environmental protection within laboratories and industrial facilities. With its DC ECM blower, this is the

biological safety cabinets have earned more independent certifications, in more countries, in more languages, than any other product. Call 0330 113 0303 to discuss your various options with a rep.

most energy-efficient Class II biosafety cabinet in the world, with 70% energy savings compared to AC motors. Self-compensating airflow, despite building voltage fluctuations and filter loading.



**Airstream® Class II Biological Safety Cabinet**  
Gen 3 S-Series

● ULPA Filter\* with 99.999% efficiency against 0.3µm particles, 99.995% filter efficiency for MPPS at 0.1µm improves safety

- Sentinel™ Gold Microprocessor Controller displays all safety information on one screen
- Airflow sensor alerts the user if airflow is sufficient for greater safety
- Side capture zones and negative pressure side walls optimise containment
- ISOCIDETM powder coat inhibits microbial growth on external surface prevents contamination and improves safety
- Single-Piece Stainless Steel work top with coved construction retains spill
- Ergonomically-designed raised arm rest helps prevent grille blocking and create a comfortable working posture
- RS 232 Serial Interface Port enables sending of operational information to Building Management System
- Single-Piece Stainless Steel inner liner with large radiused corners facilitates easy cleaning and contamination
- Available in 0.6m [2'], 0.9m [3'], 1.2m [4'], 1.5m [5'], 1.8m [6'] sizes



**Guardware**  
cleanroom hardware

\*According to American Standard IEST-PP-CC001, equivalent to HEPA H14 for EU-Standard EN1822



**NordicSafe® Low Noise**  
Class II Biological Safety Cabinet

**Labculture®**  
Class II  
Low Noise  
Biosafety  
Cabinet



**Streamline®**  
Class II  
Biological  
Safety  
Cabinet  
Stainless  
Steel Side Walls  
SC2-S series



● The Esco NordicSafe® Class II Biological Safety Cabinet is an effective solution to providing operator, product and environmental protection within laboratories and industrial facilities. The cabinet features the use of two ULPA filters to deliver ISO3 air cleanliness to the work zone.

**Cytoculture® Lead-Shielded**  
Class II Biosafety Cabinet



Call 0330 113 0303 to speak with a Guardtech rep about all your equipment needs

# BIO SAFETY CABINETS

## CLASS III



LIFESCIENCES GROUP

Esco offers a range of Class III cabinets that provide the highest level of personnel, product and environment protection against agents assigned to biosafety levels one, two, three and four.

● Class III cabinets can be custom-built to suit different process and budget requirements of the client. Multiple Class III cabinets can be joined together in a 'line' to provide a larger working space. Several pieces of

They are frequently used for handling the deadliest biohazards such as bacteria, viruses and microorganisms. Call 0330 113 0303 to discuss your various options with a Guardtech rep.

equipment, such as refrigerators, shelves, microscopes, centrifuges and incubators, can be installed inside the Class III cabinets upon request. Call 0330 113 0303 for more information on your cabinet options.



**Airstream® Class III Biological Safety Cabinet**

- Exhaust air is double-filtered through high-quality ULPA filters (per IEST-RP-CC-001.3) with typical efficiency of >99.999% for 0.1 to 0.3 micron particles, better than HEPA filters
- An angled cabinet front ensures a comfortable working posture
- Exclusive dual exhaust filters provide > 100,000 times better protection than single-stage designs
- Microprocessor-based Esco Sentinel™ Silver control system provides visual/audible alarms for airflow
- Magnehelic\* pressure gauge is mounted in the rear of the work zone for at-a-glance monitoring of work zone negative pressure
- Neoprene™ gauntlets are single-piece, leak-tested glove assemblies which guarantee maximum protection
- An integrated pass-through with interlocking doors permits materials transfer without risk of environmental contamination
- Esco ISOCIDE™ antimicrobial surface on all painted surfaces minimizes contamination
- Cabinet operates at negative pressure relative to the laboratory in order to prevent migration of pathogenic materials out of the work area



cleanroom hardware

\*Registered trademark of Dwyer Instruments, Inc.



**Containment Barrier Isolator**

- Facilitates the isolation of a product or process while providing the required conditions for a sterile/aseptic environment.



**Isoclean® Healthcare Platform Isolator**

Call 0330 113 0303 to speak with a Guardtech rep about all your equipment needs

- Provides sterile environment for aseptic preparations. Factory-configured to operate at positive or negative pressure in a recirculating or total exhaust airflow scheme.



**Streamline® Compounding Isolator**

# LAMINAR FLOW UNITS

**VERTICAL** **ESCO**  
LIFESCIENCES GROUP

Guardtech have partnered with Esco to bring you an extensive, exciting range of cleanroom equipment solutions, with an array of models to meet your laminar flow clean bench needs. Esco's

● The full range of the new Esco Airstream laminar flow clean benches are powered by the latest generation DC ECM motor. It is more efficient than legacy ECM and VFD motors and now also offers ISO Class 3 workzone with 10x

new generation Airstream® laminar flow units offer a wide range of options in terms of material specifications, width and height. Call 0330 113 0303 to discuss your various options with a rep.

the efficiency of its ULPA H14 filters. With more choice for customers, Esco laminar flow clean benches still offer the same level of product protection for your samples and processes where operator protection is not required.



**Airstream® Gen 3 Laminar Flow Clean Bench**  
*Glass Side Wall*

- Sentinel™ Gold Microprocessor Controller displays all safety information on one screen
- Spill-retaining worktop design will ensure containment of accidental liquid spills
- ISOCIDE™ Powder Coat (silver-impregnated) that inhibits microbial growth to improve safety
- Energy efficient DC ECM Motor that offers 70% energy savings compared to AC Motor - offering stable airflow, despite voltage fluctuations and filter loading
- New features that still maintains excellent performance but with low noise at 54.5 dBA
- Each clean bench is individually factory tested for safety and performance in accordance with international standards
- 10x filtration efficiency of HEPA filter creates ISO Class 3 workzone instead of industry-standard ISO Class 5
- All components are cleanroom compatible
- Esco Airstream® Laminar Flow Clean Benches have been tested for cross-contamination and product protection using microbiological test method adopted from EN12469



**OptiMair™ Vertical Laminar Flow Clean Bench**

● OptiMair Series Clean Benches are useful for mycology, food microbiology, plant and mammalian cell culture, clinical pharmacy and hospital protocols, cleanrooms, semiconductor assembly, pharmaceutical, aerospace and medical devices industries, where product protection is required for the user.

**Airstream® Gen 3 Laminar Flow Clean Benches**  
*Sliding Sash - Glass Side Wall*



**Airstream® Gen 3 Laminar Flow Clean Benches**

*Fixed Sash - Stainless Steel Side Wall*



Call 0330 113 0303 to speak with a Guardtech rep about all your equipment needs

# LAMINAR FLOW UNITS

## HORIZONTAL

Guardtech have partnered with Esco to bring you an extensive, exciting range of cleanroom equipment solutions, with an array of models to meet your laminar flow clean bench needs. Esco's

● The full range of the new Esco Airstream laminar flow clean benches are powered by the latest generation DC ECM motor. It is more efficient than legacy ECM and VFD motors and now also offers ISO Class 3 workzone with 10x

new generation Airstream® laminar flow units offer a wide range of options in terms of material specifications, width and height. Call 0330 113 0303 to discuss your various options with a rep.

the efficiency of its ULPA H14 filters. With more choice for customers, Esco laminar flow clean benches still offer the same level of product protection for your samples and processes where operator protection is not required.

- Sentinel™ Gold Microprocessor Controller displays all safety information on one screen
- Spill-retaining worktop design will ensure containment of accidental liquid spills
- ISOCIDE™ Powder Coat (silver-impregnated) that inhibits microbial growth to improve safety
- Energy efficient DC ECM Motor that offers 70% energy savings compared to AC Motor - offering stable airflow, despite voltage fluctuations and filter loading
- New features that still maintains excellent performance but with low noise at 54.5 dBA
- Each clean bench is individually factory tested for safety and performance in accordance with international standards
- 10x filtration efficiency of HEPA filter creates ISO Class 3 workzone instead of industry-standard ISO Class 5
- All components are cleanroom compatible
- Esco Airstream® Laminar Flow Clean Benches have been tested for cross-contamination and product protection using microbiological test method adopted from EN12469



**Airstream® Gen 3 Laminar Flow Clean Bench**  
Glass Side Wall

**ESCO**  
LIFESCIENCES GROUP



### Ventilated Balance Enclosure

● Ventilated Balance Enclosure (VBE) is designed for stability and accuracy while ensuring a high level of operator protec-

tion by containing hazardous airborne powder. Through the aerodynamic design sash and armrest, airborne particles are

well contained inside the enclosure and exhausted through a HEPA filter or direct to the pharmacy exhaust.

### Airstream® Gen 3 Laminar Flow Clean Benches

Horizontal - Stainless Steel Side Wall



**Airstream® Horizontal Laminar Flow Clean Bench**  
For Plant Tissue Culture



Call 0330 113 0303 to speak with a Guardtech rep about all your equipment needs

# FUME HOODS

**DUCTLESS** **ESCO**  
LIFESCIENCES GROUP

Esco Ascent Ductless Fume Hoods provide protection to both laboratory personnel and the environment from toxic fumes and are quickly becoming

a viable alternative to conventional fume hoods. Call 0330 113 0303 to discuss our various options with a Guardtech rep.

● These hoods filter out chemical fumes and recycle air directly back to the laboratory, providing energy savings, personnel and environmental protection, and convenience, as you

do not have to deal with complicated ducting systems, and mobility, since ductless hoods are independent systems. Guardtech are also able to offer ducted fume cupboard options.

- Electrogalvanised steel wall for maximum durability
- Front service panel opens up easily for maintenance functions
- Grade 304 stainless steel work top surface that will never rust, chip or generate particles
- Lip at the front edge of work surface ensures that any spillage is contained in the work zone
- All cabinet service and filter replacement can be carried out from the front, allowing the cabinet to be placed against wall in the laboratory to save space
- Optional VOC sensor to monitor chemical concentration within the cabinet work zone
- Ergonomically-designed raised arm rest helps prevent grille blocking and create a comfortable working posture
- Over eight different Nanocarb™ filter types to choose from: volatile organic compounds, acid, mercury, sulphur, halogen, aldehyde, ammonia or ethers/chloroform

Ascent™ Max Ductless Fume Hood  
Standard Model ADC (B-Series)



Ascent™ Opti Ductless Fume Hoods



## DUCTED FUME CUPBOARDS

Also available for installation. Call 0330 113 0303 or email [sales@guardtech.com](mailto:sales@guardtech.com) for more information.

# NITROGEN GENERATORS

The Guardtech Group's Nitrogen Generators are a reliable and efficient alternative to conventional high pressure cylinder and liquid gas supplies. Taking away the ongoing costs, safety considerations and transportation of traditional gas supplies, our generators are some of the most advanced and intelligent available.



● The control system gives the user all the necessary information to ensure an efficient, consistent supply of gas is always available. From process to flow and alarms – including auto-start/stop functionality – trend graphs, service alarm and service records pages, these generators are well worth the investment.

- Range of flow rates
- Storage vessels available
- Compact and quiet design
- 99.9995%-98% purity
- Auto-run facility
- Energy-saving mode
- Outlet flow indicator (% flow)
- Trend graphs for MS Excel
- Alarms with help menu
- Audible alarm
- Remote access via Internet
- With or without internal, oil-free air compressor



GENERATOR	FLOW RATE	PURITY	PRESSURE	L	W	H	WITH COMPRESSOR	WITHOUT COMPRESSOR
GT1-1	1.0 l/min	99.9995%	75.0 psi g	300	320	650	GNGCM1999995	GNGNC1999995
GT3-3	3.0 l/min	99.9995%	75.0 psi g	660	400	700	GNGCM3999995	GNGNC3999995
GT4-4	4.0 l/min	99.95%	80.0 psi g	550	320	650	GNGCM4009995	GNGNC4009995
GT6-6	6.0 l/min	99.9995%	100.0 psi g	660	400	700	GNGCM6999995	GNGNC6999995
GT6-10	10.0 l/min	99.99%	100.0 psi g	660	400	700	GNGCM1009999	GNGNC1009999
GT6-16	16.0 l/min	99.9%	100.0 psi g	660	400	700	GNGCM1600999	GNGNC1600999
GT6-25	25.0 l/min	99.5%	100.0 psi g	660	400	700	GNGCM2500995	GNGNC2500995
GT6-30	30.0 l/min	99%	100.0 psi g	660	400	700	GNGCM3000099	GNGNC3000099

# AUTOCLAVES

## FREE STANDING

The Guardtech Group provide a range of autoclaves specifically designed for use within the laboratory industry to sterilise plastics, media, liquid, glassware and instruments.

Our large capacity auto-

claves with intuitive Logiclave® control systems have been designed for ease of operation and maintenance.

Built to a high specification, they are renowned for both quality and reliability.

● All Guardtech autoclaves adhere to the relevant national and international standards for ultimate peace of mind.

With a choice of chamber designs, door options and containment models, there is an autoclave to suit your business' needs.

● The LAB300V is a self contained freestanding multipurpose autoclave for a variety of laboratory applications

● Other models in this range are the LAB150V and LAB225V which each share similar footprints and design characteristics



LAB300V free standing autoclave

# AIR SHOWERS



Self contained chambers installed at entrances to clean-rooms and other controlled environments. They minimise particulate matter entering or exiting the clean space. Personnel and materials entering or exiting the controlled environment are "scrubbed" by high velocity HEPA-filtered air jets with velocities of 20-22m/s (4000-4300fpm). Contaminated air is then drawn through the base within the unit, filtered and recirculated.

● High velocity shower jets in excess of 20 m/s ensure efficient scrubbing action

● Operating modes can be programmed in the field

● Microprocessor controller supervises all functions

● Mini-pleated HEPA filtration achieves > 99.999% typical efficiency at 0.3 micron particles



EAS-1B8-EUS (Assembled) Cleanroom Air Shower



## BUILT-IN AUTOCLAVES

A typical sterile services arrangement of 4x Logiclave PL600 porous load sterilizers. Available with single door or passthrough options.

Also available for installation. Call 0330 113 0303 or email [sales@guardtech.com](mailto:sales@guardtech.com) for more information.



Multiple Occupancy Showers



Infinity Air Shower Pass Box

# MEASURING INSTRUMENTS

The Sauermann DBM 620 Air Flow Meter is a multipurpose electronic air balancing instrument

primarily used for efficiently taking direct air volume readings from air vents.

- Air Changes per Hour (ACPH) metric is the first of its kind to be included in a Balometer
- Easily swap between five different hood configurations
- SmartKap App allows for easy reading and export of data
- Also functions as autonomous micromanometer with Pitot tube attachment
- Lighter and smaller than previous models
- Extendable tripod eliminates the need for ladders in most environments

## DBM 620 Air Flow Meter

MEASURING INSTRUMENT	PRODUCT CODE
DBM 620 Air Flow Meter	GTMEASDBM620



## LV 110 Thermo-anemometer

- Displays velocity and temperature measurements
- Airflow calculation
- Automatic average
- Hold function and min-max values
- Selection of units
- Airflow calculation, airflow calculation with cone (LV 110/117), detection of flow direction

MEASURING INSTRUMENT	PRODUCT CODE
LV 110 Thermo-anemometer with integrated vane probe	GTMEASLV110
HD 110 Thermo-hygrometer	GTMEASHD110
VT 210 Thermo-hygrometer-anemometer	GTMEASVT210



## HD 110 handheld thermo-hygrometer

- HD 110 handheld thermo-hygrometer measures relative humidity, temperature and dew point
- Measuring range: humidity: 5 to 95% RH, temperature: -20 to +70°C, and dew point: -40 to +70°C td
- Calibration certificate

## VT 210 Thermo-hygrometer-anemometer

- Designed for the control of ventilation systems - allows users to measure air velocity, airflow and temperature in ducts
- Up to six measurements simultaneously



# TRANSMITTERS

## C320 Multifunction Sensor

- Multifunction for VAC IAQ and applications
- Displays and measures four parameters simultaneously
- 4 x analogue outputs
- 2 x inputs for external probes
- 1 x RS-485 interface for Modbus RTU protocol
- Graphic touch display
- Visual channel alarms plus acoustic alarm
- Wireless communication (optional) with mobile app



MEASURING INSTRUMENT	PRODUCT CODE
C320 Multifunction Sensor	GTMEASC320

## CPE320 Transmitter

- Flushmount multifunction pressure sensor
- Measures temperature, humidity, air velocity, CO, CO2
- Three visual and audible alarms
- IP 66, VHP resistant

MEASURING INSTRUMENT	PRODUCT CODE
CPE320 Transmitter	GTMEASCPE320









Guardian House  
Unit 1A Homefield Road,  
Haverhill, CB9 8QP



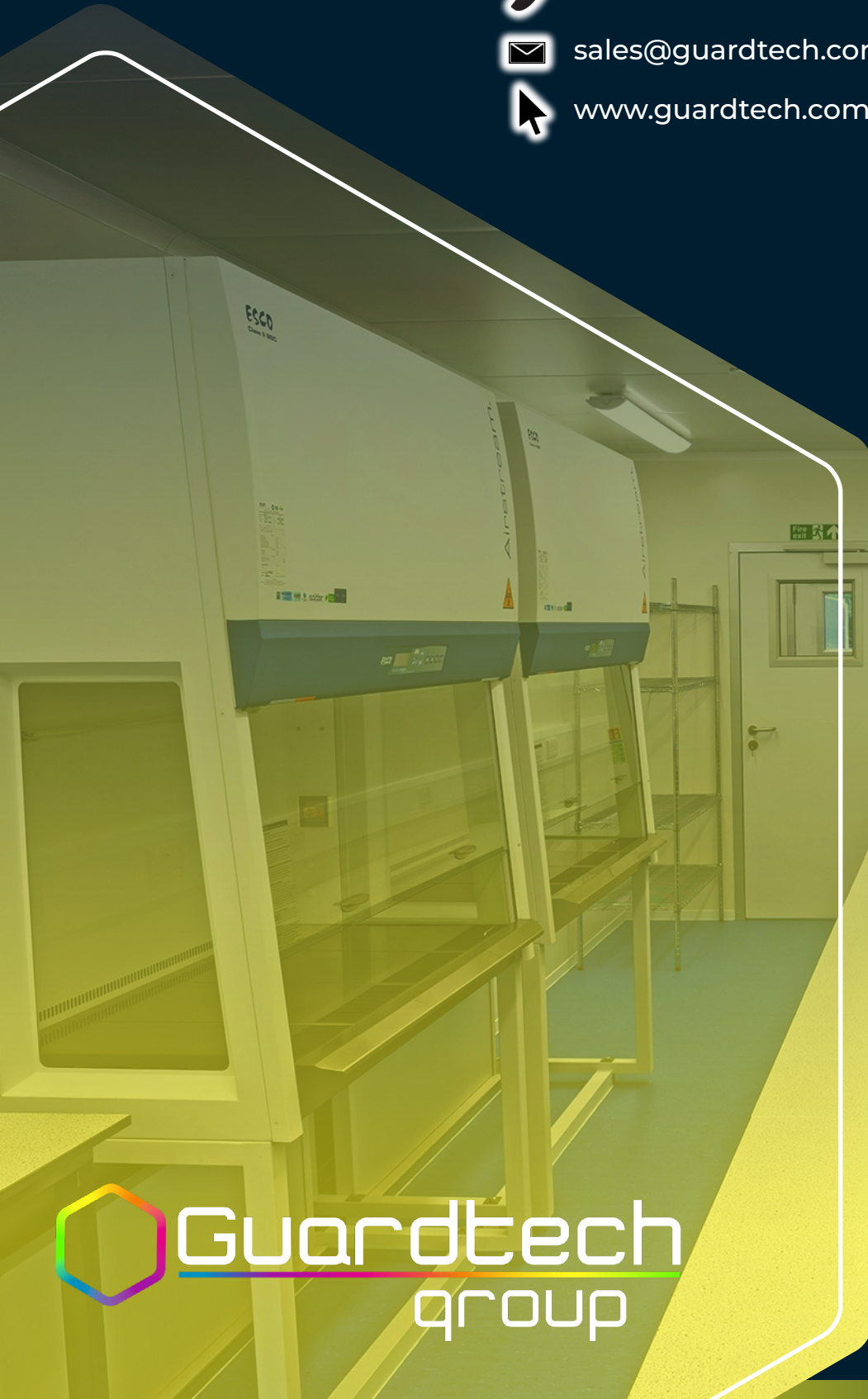
0330 113 0303



[sales@guardtech.com](mailto:sales@guardtech.com)



[www.guardtech.com](http://www.guardtech.com)



 **Guardtech**  
group

